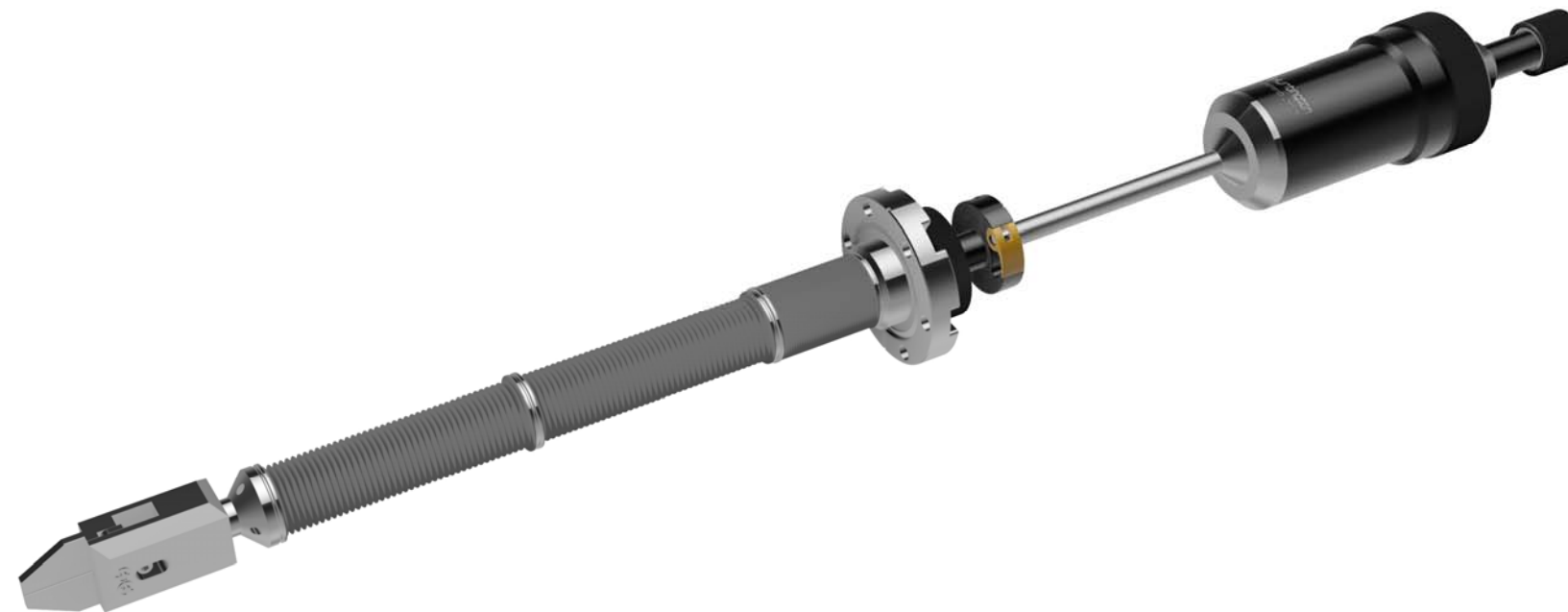
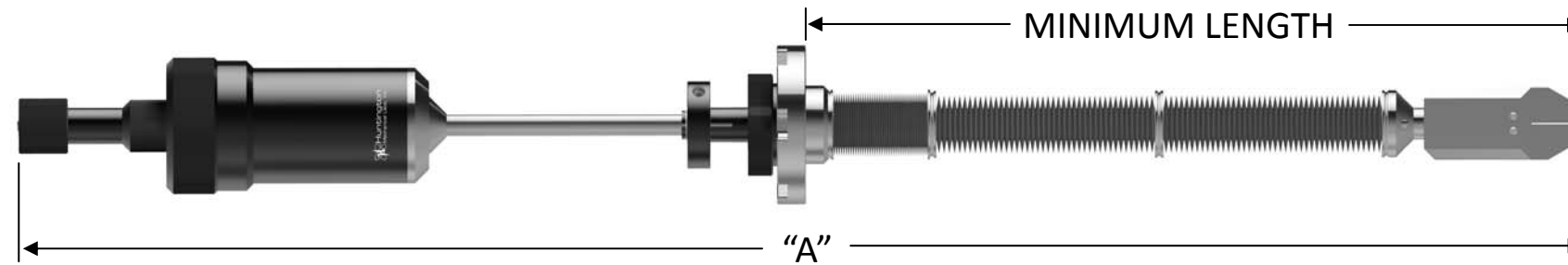


**Specifications**

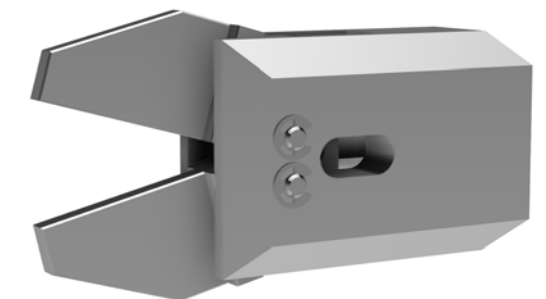
**Sealing Mechanism:** Welded Bellows  
**Material Exposed to Vacuum:** Stainless Steel  
**Standard Mounting:** 2 3/4" VAC-U-FLANGE®  
**Bakeout Temperature:** 200°C (Maximum)

**Operating Temperature:** -20° to 150°C  
**Pressure Range:** Atmosphere to 1 x 10<sup>-11</sup> Torr  
**Maximum Torque:** 125 oz./in.  
**Maximum Axial Load:** 10 lbs. concentric  
**Angular Motion:** 45° included angle

THIS DRAWING IS THE PROPERTY OF HUNTINGTON MECHANICAL LABS, INC., AND IS PROPRIETARY IN GENERAL AND IN DETAIL. IT SHALL NOT BE MODIFIED IN ANY WAY. PERMISSION IS GIVEN TO PRINT AND DISSEMINATE FREELY.



PINCER  
 DETAIL  
 (JAWS OPEN)



Dimensions: inches (mm)

**LINEAR / ANGULAR WOBBLE STICK with ROTATION**

FLANGE	LINEAR TRAVEL	MINIMUM LENGTH	"A"	WEIGHT (lbs.)	PART NUMBER
2 3/4"	5"	5.94	22.82	8.0	VF-176-5-R
	10"	7.72	27.80	8.5	VF-176-10-R

*Other Pincers & custom designs available. For quotes, please call 800-227-8059 or visit our website at [www.huntvac.com](http://www.huntvac.com). Email: [vacman@huntvac.com](mailto:vacman@huntvac.com)*

		13355 NEVADA CITY AVENUE GRASS VALLEY, CA. 95945
<b>FEEDTHRU, LINEAR/ANGULAR                  WOBBLESTICK W/ROTATION</b>		
<b>B</b>	DWG. NO. VF-176-XX-R OUTLINE	REV. -
SCALE: NO SCALE	SHEET: 1	OF 1