

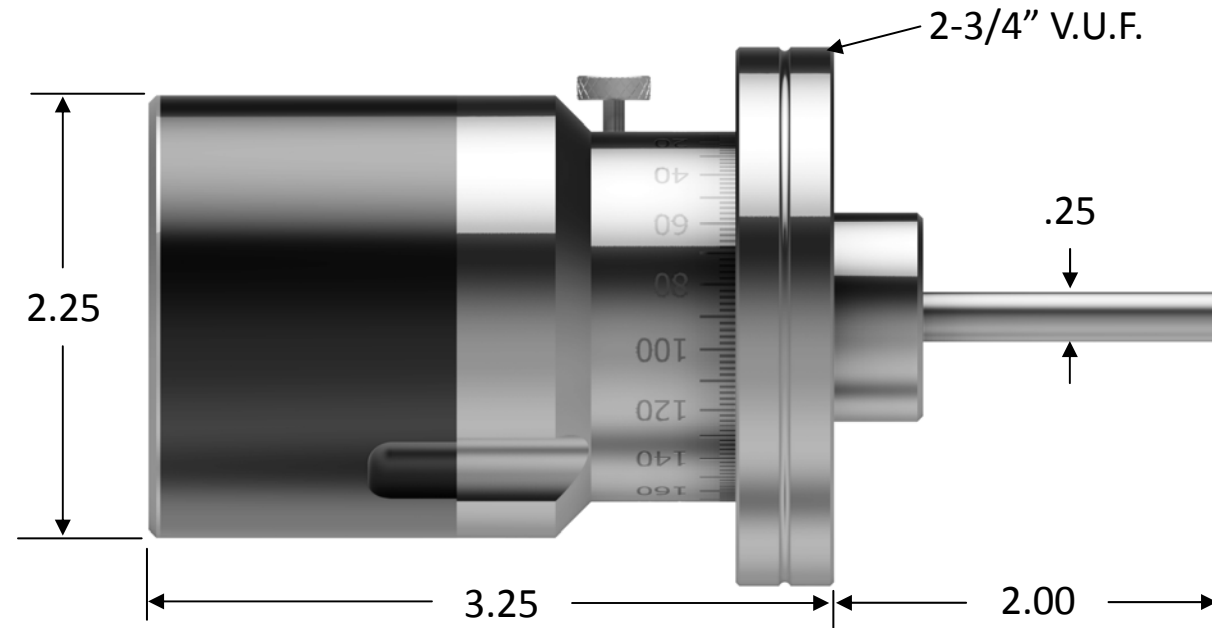
Specifications

Sealing Mechanism: Welded Bellows
Material Exposed to Vacuum: Stainless Steel
Bakeout Temperature: 200°C
Operating Temperature: -20° to 150°C

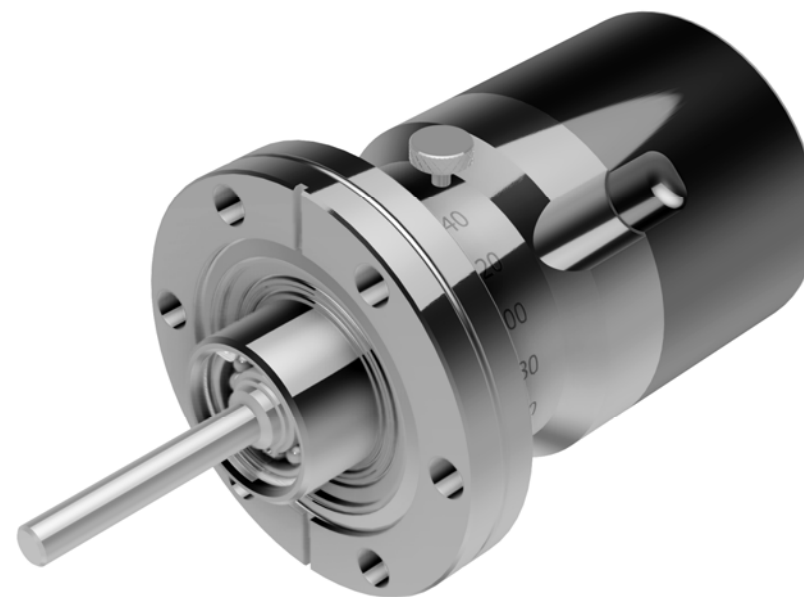
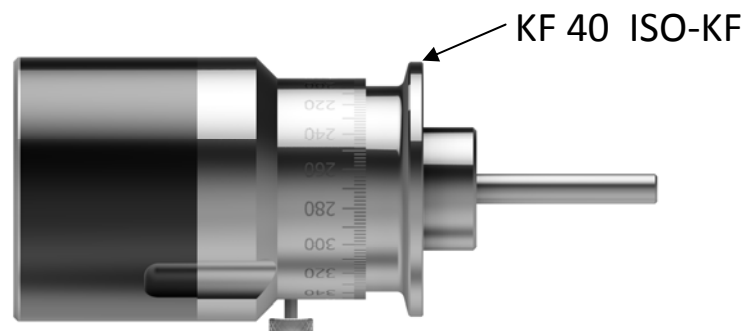
Pressure Range: Atmosphere to 1×10^{-11} Torr
Position Lock: Thumb Screw
Maximum Torque: 320 oz.-in.
Scale Resolution: 2°

THIS DRAWING IS THE PROPERTY OF HUNTINGTON MECHANICAL LABS, INC., AND IS PROPRIETARY IN GENERAL AND IN DETAIL. IT SHALL NOT BE MODIFIED IN ANY WAY. PERMISSION IS GIVEN TO PRINT AND DISSEMINATE FREELY.

VF-161



VF-161-SF




Dimensions: inches (mm)

VF-161 MANUAL PRECISION ROTARY

FLANGE	DESCRIPTION	WEIGHT (lbs.)	PART NUMBER
2 3/4"	Compact Design, w/1/4" shaft	3.0	VF-161
KF 40	Compact Design, w/1/4" shaft	2.5	VF-161-SF

This compact design manual rotary is perfect for cramped quarters installations and features indication scale with thumb screw lock.

Custom configuration & flange options available. For quotes, please call 800-227-8059 or visit our website at www.huntvac.com. Email: vacman@huntvac.com

		13355 NEVADA CITY AVENUE GRASS VALLEY, CA. 95945	
FEEDTHROUGH, ROTARY, MANUAL, PRECISION COMPACT SERIES			
B	DWG. NO.	VF-161-(SF) OUTLINE	REV.
SCALE: NO SCALE		SHEET: 1	OF 1