

**Specifications**

**Sealing Mechanism:** Welded Bellows  
**Material Exposed to Vacuum:** Stainless Steel  
**Bakeout Temperature:** 200°C, (Motor Removed)  
**Operating Temperature:** -20° to 80°C

**Pressure Range:** Atmosphere to  $1 \times 10^{-11}$  Torr  
**Maximum Torque:** 125 oz./in.  
**Motor Accuracy:** 51,200 microsteps/revolution  
**Stepper Motor:** 1.8° -full step

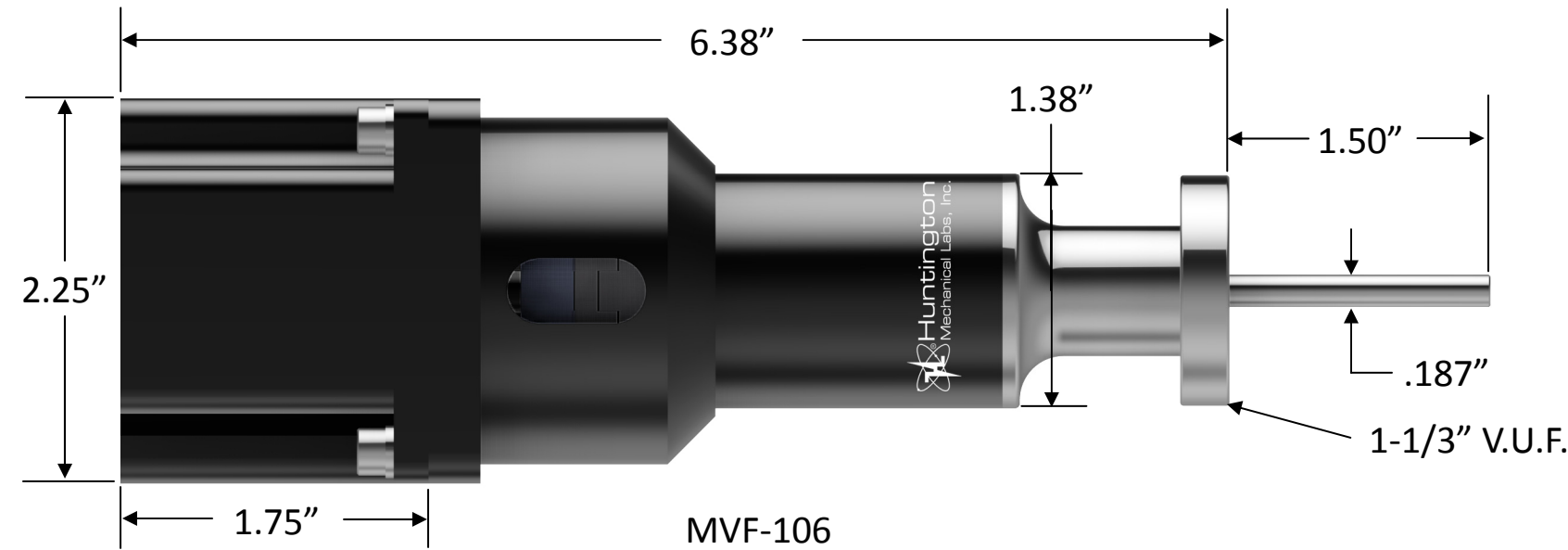
THIS DRAWING IS THE PROPERTY OF HUNTINGTON MECHANICAL LABS, INC., AND IS PROPRIETARY IN GENERAL AND IN DETAIL. IT SHALL NOT BE MODIFIED IN ANY WAY. PERMISSION IS GIVEN TO PRINT AND DISSEMINATE FREELY.



**SPECIAL ORDER**

Absolute & Incremental Encoders are available, with and without view screen, in various configurations. Please call Technical Sales at:

800-227-8059



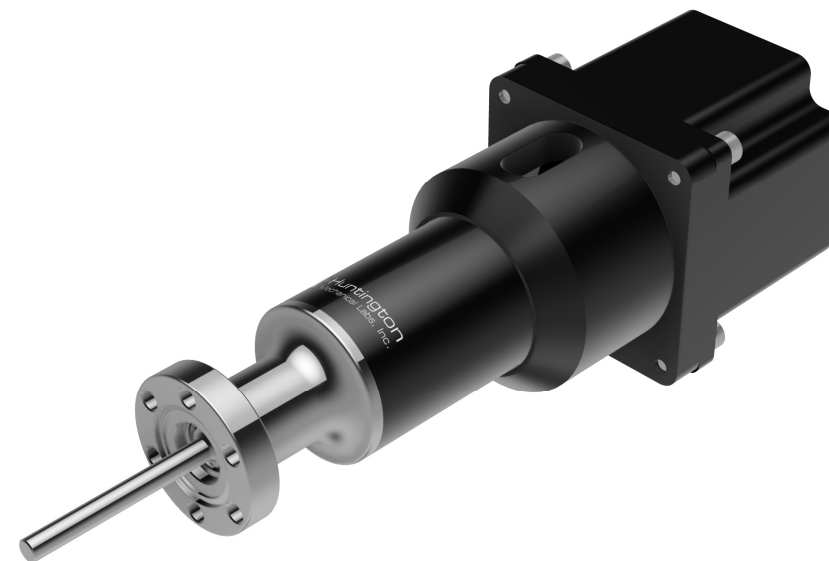
MVF-106-A



MVF-106-SF



MVF-106-SF-150



**MOTORIZED MINI ROTARY FEEDTHROUGH**

FLANGE	DESCRIPTION	WEIGHT (lbs.)	PART NUMBER
<b>VAC-U-FLANGE® Series</b>			
1 1/3"	Rotary Feedthrough, Anodized w/ Motor	2.6	MVF-106
2 3/4"	Rotary Feedthrough, Anodized w/ Motor	3.2	MVF-106-A
<b>SPEED FLANGE SYSTEM (ISO-KF)</b>			
KF 16	Rotary Feedthrough, Anodized w/ Motor	2.5	MVF-106-SF
KF 40	Rotary Feedthrough, Anodized w/ Motor	2.7	MVF-106-SF-150

Other control devices & flange options available. For quotes, please call 800-227-8059 or visit our website at [www.huntvac.com](http://www.huntvac.com). Email: [vacman@huntvac.com](mailto:vacman@huntvac.com)

		13355 NEVADA CITY AVENUE GRASS VALLEY, CA. 95945
<b>MINI ROTARY MOTION                  FEEDTHROUGH, MOTORIZED</b>		
<b>B</b>	DWG. NO. MVF-106-X OUTLINE	REV. -
SCALE: NO SCALE	SHEET: 1	OF 1