

Specifications

Sealing Mechanism: All metal Seal

Material Exposed to Vacuum: 304 Stainless Steel

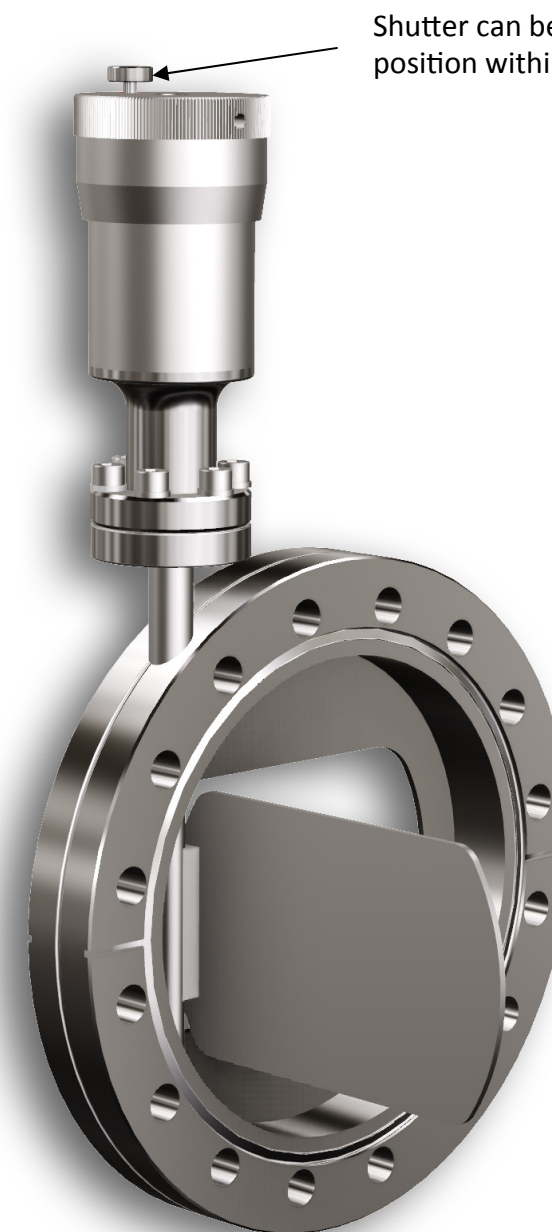
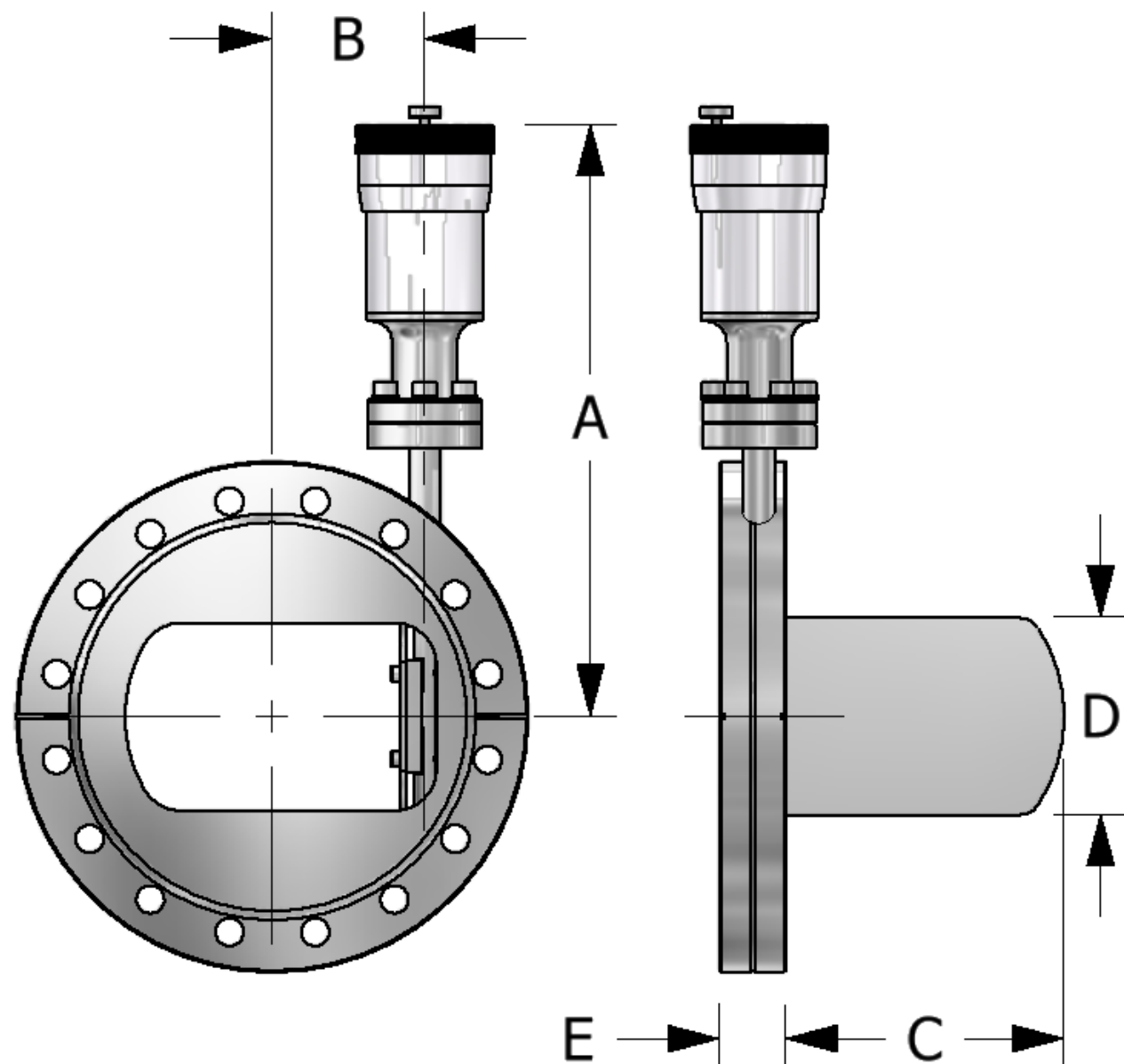
Standard Mounting: Double sided VAC-U-FLANGE® (CF)

Bakeout Temperature: 300°C

Operating Temperature: -20 to 250°C

Pressure Range: Atmosphere to 1×10^{-11} Torr

THIS DRAWING IS THE PROPERTY OF HUNTINGTON MECHANICAL LABS, INC., AND IS PROPRIETARY IN GENERAL AND IN DETAIL. IT SHALL NOT BE MODIFIED IN ANY WAY. PERMISSION IS GIVEN TO PRINT AND DISSEMINATE FREELY.



Mounted between viewport and port flange the shutter protects the viewport during processes which might cloud or damage the viewable substrate.

Dimensions: inches (mm)

BELLOWS SEALED VIEWPORT SHUTTERS

FLANGE OD	A	B	C	D	E	WEIGHT (lbs.)	PART NUMBER
2 3/4"	5.58	0.54	0.87	1.00	0.75	1.60	BFS-275
3 3/8"	5.93	0.85	1.47	0.87	0.62	2.20	BFS-337
4 1/2"	6.30	1.18	1.85	1.60	0.68	2.90	BFS-450
6"	7.12	1.78	3.24	2.30	0.78	3.80	BFS-600
8"	7.90	2.07	4.46	4.00	0.87	6.75	BFS-800

Other flange options available. For quotes, please call 800-227-8059 or visit our website at www.huntvac.com. Email: vacman@huntvac.com

		13355 NEVADA CITY AVENUE GRASS VALLEY, CA. 95945
BELLOWS SEALED SHUTTER For VIEWPORT PROTECTION		
B	DWG. NO. BFS-XXX OUTLINE	REV. -
SCALE: NO SCALE	SHEET: 1	OF 1