



Bell Jars, Collars & Baseplates .	236
Dished Heads	239
Universal Vacuum Chamber....	240
GEC Reference Cell	241
Custom Vacuum Chambers	242

8 Vacuum Chambers



Bell Jars, Collars & Baseplates

Glass Bell Jars

Huntington offers Pyrex™ bell jars for simple, low-cost experimental vacuum chambers. We also offer the researcher complimentary accessories to complete the table-top vacuum system. Bell jar guards are available to fit all Huntington bell jars. They are constructed of lightweight expanded metal reinforced at the top and bottom. In addition to protecting bell jars from breakage, they also provide implosion protection for personnel and equipment.

Stainless Steel Bell Jars, Feedthrough Collars & Baseplates

Single and water-cooled, double-wall stainless steel bell jars are available. Stainless steel bell jars are provided standard with a single Pyrex viewport and a lifting lug. Huntington also offers a line of stainless steel feedthrough collars and pump well baseplates to fit glass and stainless steel bell jars as listed.



Glass Bell Jars

Nominal Dia. x Ht.	Wall Thickness	Model	Price
10 x 12	3/16 - 7/16	BJ-100	Call
12 x 12	3/16 - 7/16	BJ-120	Call
12 x 18	3/16 - 7/16	BJ-125	Call
18 x 18	3/16 - 7/16	BJ-180	Call
18 x 30	3/16 - 7/16	BJ-185	Call

Glass Bell Jar Guards

Nominal Dia. x Ht.	Wt. Lbs.	Model	Price
10 x 12	12	BG-100	Call
12 x 12	15	BG-120	Call
12 x 18	25	BG-125	Call
18 x 18	31	BG-180	Call
18 x 30	50	BG-185	Call

Viton Glass Bell Jar Gaskets



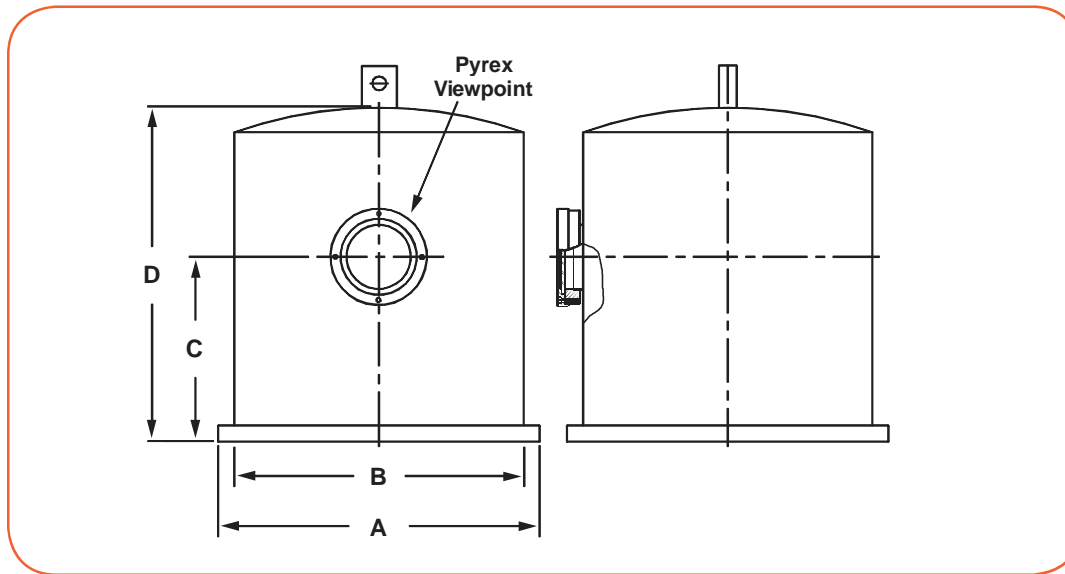
Nominal Diameter	Model	Price
8	VG-080	\$ 35.00
10	VG-100	\$ 40.00
12	VG-120	\$ 55.00
14	VG-140	\$ 70.00
18	VG-180	\$ 75.00
22	VG-220	\$145.00
24	VG-240	\$125.00
30	VG-300	\$245.00





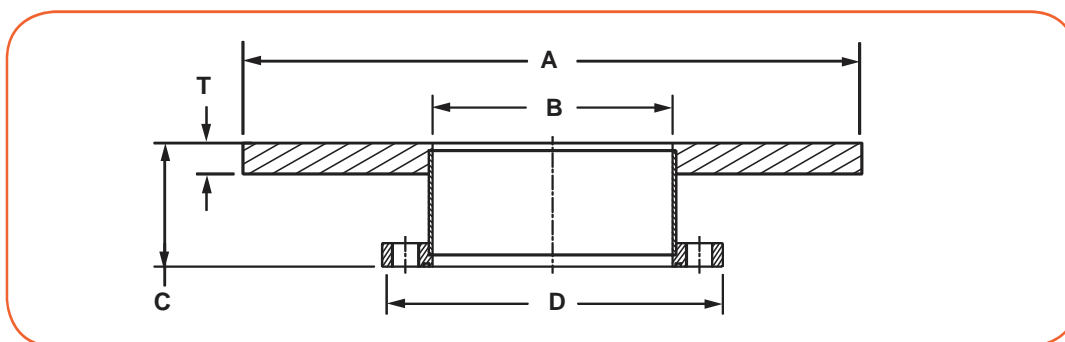
Stainless Steel Bell Jars - Single Wall

Nominal Size	Seal	A	B	C	D	Model	Price
12	O-Ring	14	12	6	12	SJB-120	Call
18	O-Ring	20	18	12	30	SJB-180	Call
24	O-Ring	26	24	12	30	SJB-240	Call
36	O-Ring	38	36	15	36	SJB-360	Call



Stainless Steel Baseplates with Pump Port

Flange Type	Nom. Dia.	A	B	C	D	T	Flange	Wt. Lbs.	Model	Price
ASA	12	14	5.83	4	9	0.75	ASA-900-600-0	50	BSP-120	Call
	18	20	7.83	4	11	1	ASA-1100-800-0	95	BSP-180	Call
	24	26	7.83	4	11	1	ASA-1100-800-0	155	BSP-240	Call
ISO	12	14	5.83	4	7.09	0.75	SF-600	50	BSP-120-SF	Call
	18	20	7.83	4	9.45	1	SF-800	95	BSP-180-SF	Call
	24	26	7.83	4	9.45	1	SF-800	155	BSP-240-SF	Call

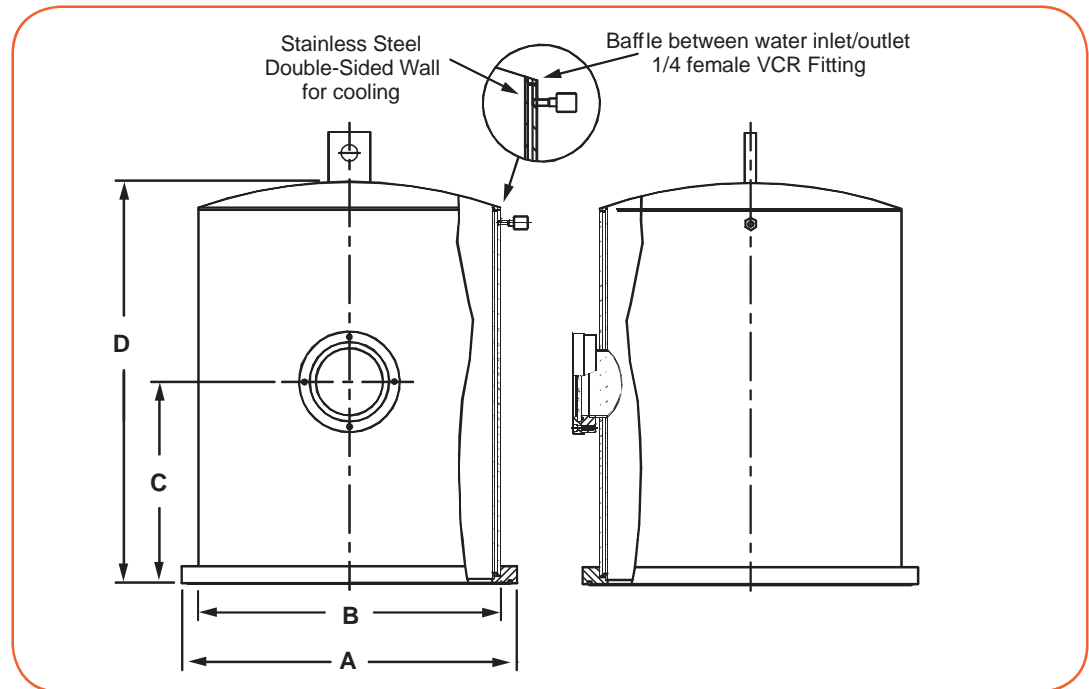


8 Vacuum Chambers



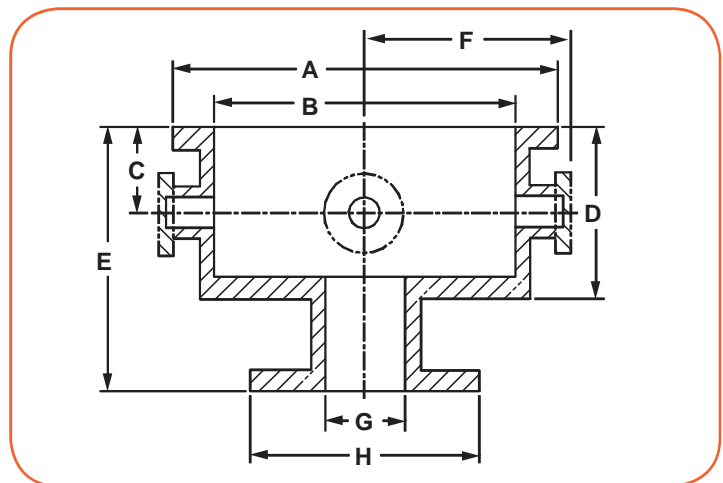
Stainless Steel Bell Jars - Double Wall

Nominal Size	Seal	A	B	C	D	Model	Price
12	O-Ring	14	12	6	12	SJB-120-D	Call
18	O-Ring	20	18	12	30	SJB-180-D	Call
24	O-Ring	26	24	12	30	SJB-240-D	Call
36	O-Ring	38	36	15	36	SJB-360-D	Call



Stainless Steel Base Wells

Nom. Dia.	Flange	No. Ports	A	B	C	D	E	F	G	H	Wt. Lbs.	Model	Price
12	2.75	4	14	11	3	6	9.18	7.5	5.83	9	65	BSW-120	Call
18	2.75	8	20	16	3	6	9.18	10	7.83	11	150	BSW-180	Call
24	2.75	18	26	23	3	6	9.18	13.5	7.83	11	230	BSW-240	Call



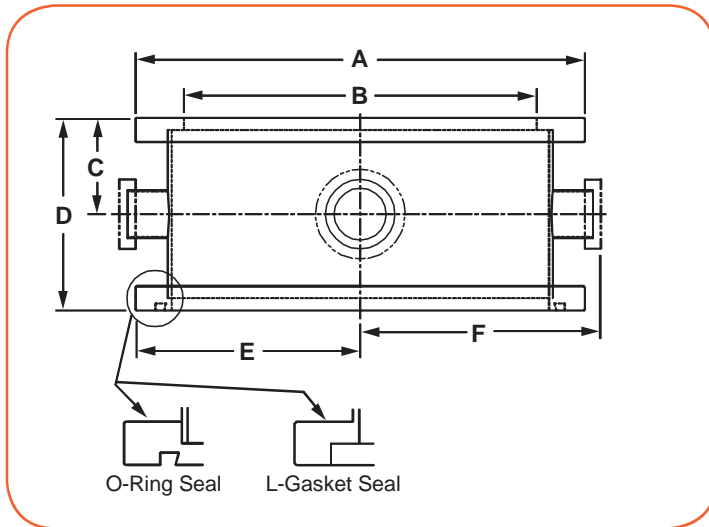


Stainless Steel Feedthrough Collars

Seal Type	Flange Type	Nominal Size	Number of Ports	Flange Size	Wt. Lbs.	Model	Price
O-Ring	Vac-U-Flat®	12	4	2.75 CF	50	FCO-120	Call
		18	8	2.75 CF	90	FCO-180	Call
		24	18	2.75 CF	140	FCO-240	Call
	Speed Flange	12	4	KF-40	50	FCO-120-SF	Call
		18	8	KF-40	85	FCO-180-SF	Call
		24	18	KF-40	130	FCO-240-SF	Call
L-Gasket	Vac-U-Flat®	12	4	2.75 CF	35	FCL-120	Call
		18	8	2.75 CF	65	FCL-180	Call
	Speed Flange	12	4	KF-40	35	FCL-120-SF	Call
		18	8	KF-40	60	FCL-180-SF	Call

Collar Dimensions

Nom. Size	A	B	C	D	E	F
12	14	11	3	6	6.25	7.5
18	20	16	3	6	9.00	10.5
24	26	23	3	6	-	13.5

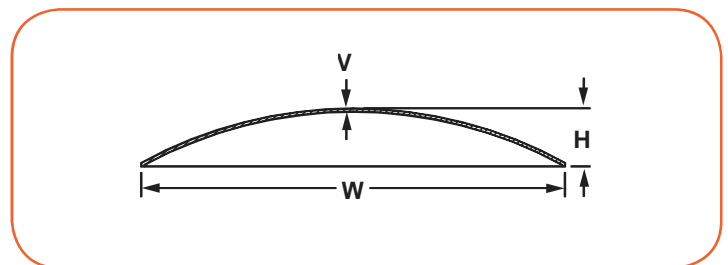


Stainless Steel Dished Heads

Because Huntington stocks several sizes of 304 stainless steel dished heads for our own use in fabrication of blank wire seal flanges and standard and custom vacuum chambers, we make those sizes available to our customers for their own internal fabrication. Non-standard sizes and materials, such as 304L or 316 stainless, can be supplied upon request.

Dished Heads

H	V	W	Model	Price
0.98	0.12	10	DH-1000	Call
1.16	0.12	12	DH-1200	Call
1.32	0.12	14	DH-1400	Call
1.49	0.12	16	DH-1600	Call
1.66	0.12	18	DH-1800	Call
2.18	0.12	24	DH-2400	Call
3.21	0.12	36	DH-3600	Call



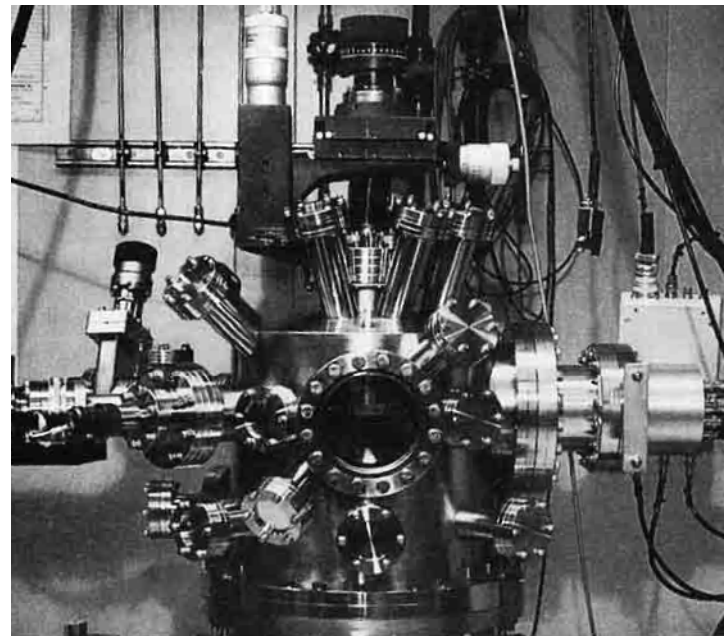
8 Vacuum Chambers



Universal Vacuum Chamber

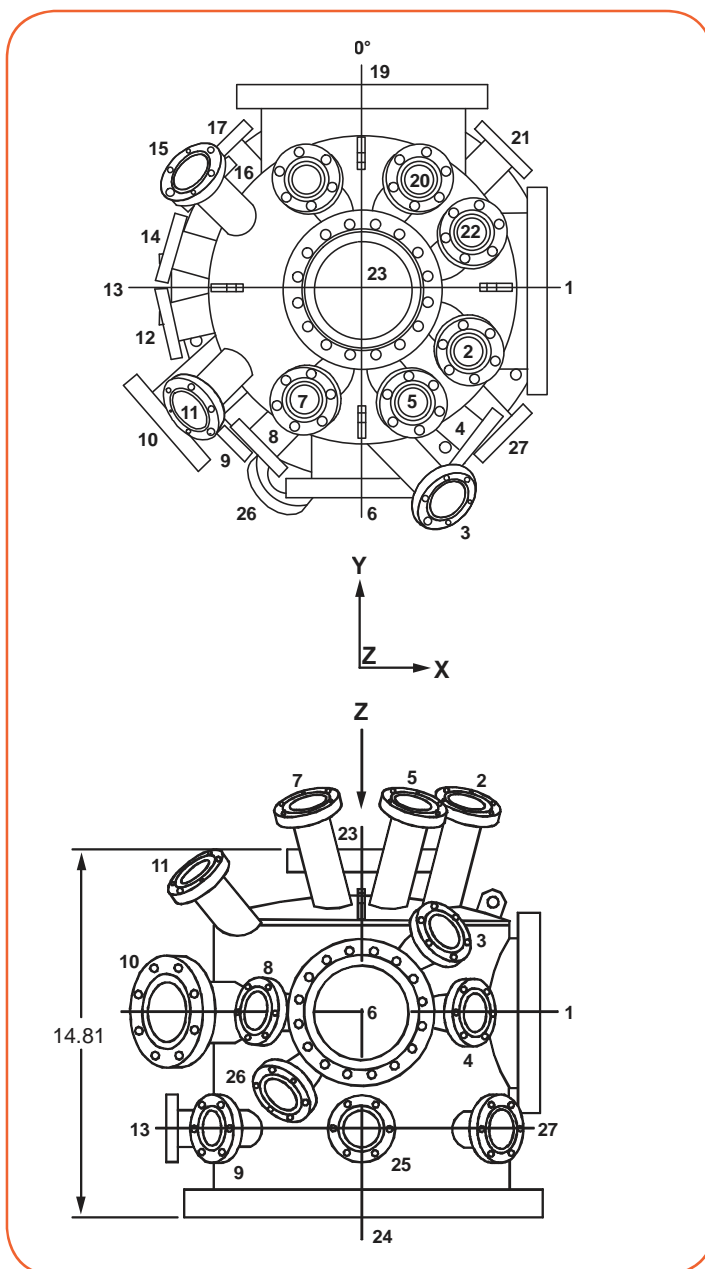
Huntington has designed an ultra-high vacuum Universal Vacuum Chamber suitable for a variety of research experiments including surface science. The chamber is made from 304 stainless steel and has a 14 inch nominal diameter with a number of ports for mounting instrumentation, sample transfer, viewports and roughing and UHV pumps. Please call for current pricing.

Whether you need this exact Universal Chamber, a modification of this chamber for a special application, or a unique chamber of your own design, Huntington can fill your needs. Call us to discuss your specific application.



Chamber Port Schedule

Port #	Port Flange	Port Lgth.	Rot. Ang.	Elev. Ang.	Target Point X	Target Point Y	Target Point Z
1	800-600	7.88	270°	90°	0	0	6.50
2	275-150	9.00	226°	21°	2.0	0	6.50
3	275-150	8.00	211°	62.5°	0	-2.0	6.50
4	275-150	7.25	215°	90°	0	0	6.50
5	275-150	9.00	224°	21°	0	-2.0	6.50
6	600-400	8.00	180°	90°	0	0	6.50
7	275-150	9.00	136°	21°	0	-2.0	6.50
8	275-150	7.25	145°	90°	0	0	6.50
9	275-150	9.00	135°	90°	0	0	11.18
10	450-250	10.0	132°	90°	-2.0	0	6.50
11	275-150	9.00	134°	53°	-2.0	0	6.50
12	275-150	6.00	103°	90°	-2.0	0	6.50
13	275-150	9.00	90°	90°	0	0	11.18
14	275-150	6.00	74°	90°	-2.0	0	6.50
15	275-150	9.00	46°	53°	-2.0	0	6.50
16	275-150	6.00	45°	90°	-2.0	0	6.50
17	275-150	9.00	45°	90°	0	0	11.18
18	275-150	9.00	44°	21°	0	2.0	6.50
19	1000-800	8.00	0°	90°	0	0	7.50
20	275-150	9.00	316°	21°	0	2.0	6.50
21	275-150	9.00	315°	90°	0	0	11.18
22	275-150	9.00	314°	21°	2	0	6.50
23	600-400	6.50	0°	0°	0	0	3.00
24	WSB-1412-F	11.81	0°	180°	0	0	3.00
25	275-150	9.00	180°	90°	0	0	11.18
26	275-150	8.00	149°	117.5°	0	-2.0	6.50
27	275-150	9.00	225°	90°	0	0	11.18



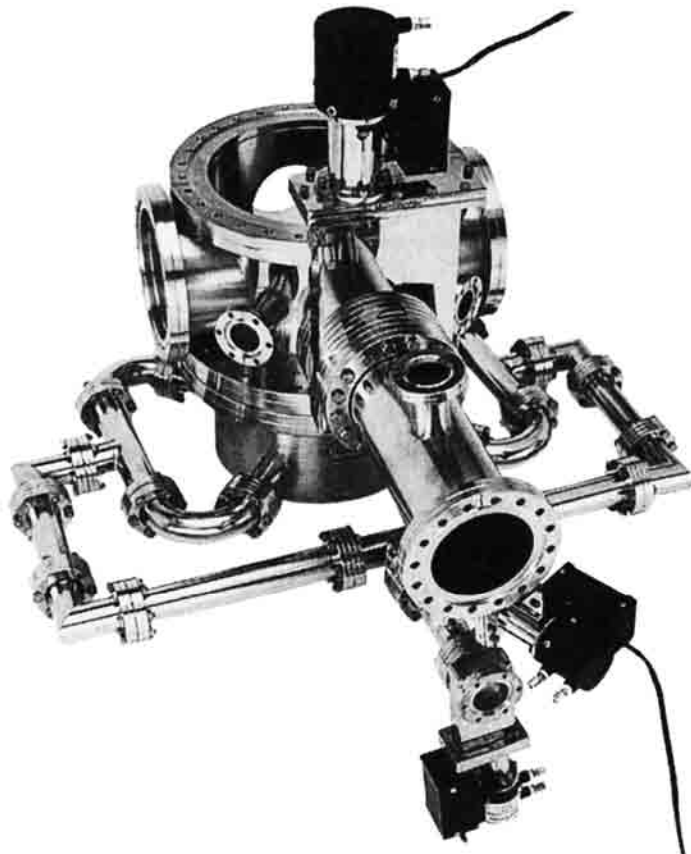


Vacuum Chambers 8

GEC Reference Cell

At the **Gaseous Electronics Conference (G.E.C.)** of October 1989, a standard chamber design was introduced as a way to eliminate the variables of chamber size, shape, and configuration, allowing data from various groups doing rf plasma research to be comparable. There are now an estimated fifty research groups using these cells.

Recognizing the importance of this standard design concept, Huntington has committed to manufacture and supply these G.E.C. reference cells as a standard product. They feature a unique symmetrical pumping well and parallel electrodes with a number of options, such as adjustable electrode height and inductively coupled coils. Please call for current pricing.



Custom Vacuum Components

Research and Development is the heart of Huntington's engineering department. Here specialists experienced in vacuum component design develop new products, make improvements to existing products, modify standard products to meet specific customer requirements or design custom chambers or components from customer specifications or sketches. Working closely with system designers and end users, Huntington know-how in design and manufacturing can be blended with the customer's process knowledge to create a cost-effective, superior end product. Original equipment manufacturers and research scientists alike prefer Huntington as a source for custom chambers, manifolds, valves, motion transfer devices and fittings.



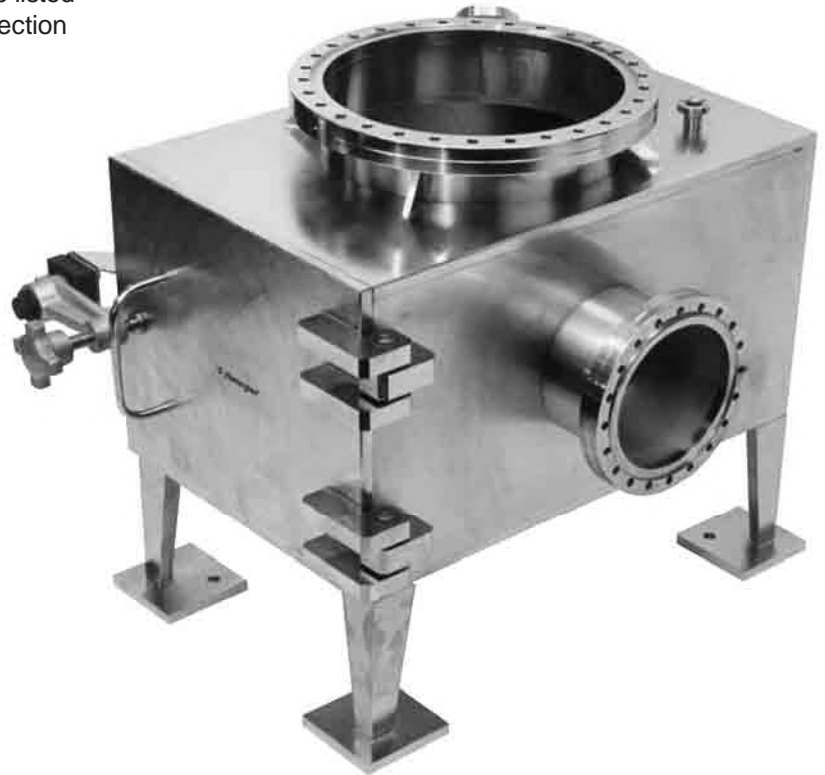
8 Vacuum Chambers



Custom Vacuum Chambers

A few samples of the various custom product types produced by Huntington are shown on these two pages. There are many others not shown including load locks, which are listed as standard products in the Manipulator and Stages section of this catalog.

Rectangular Chamber with Legs and Door



Optical Processing Manifold

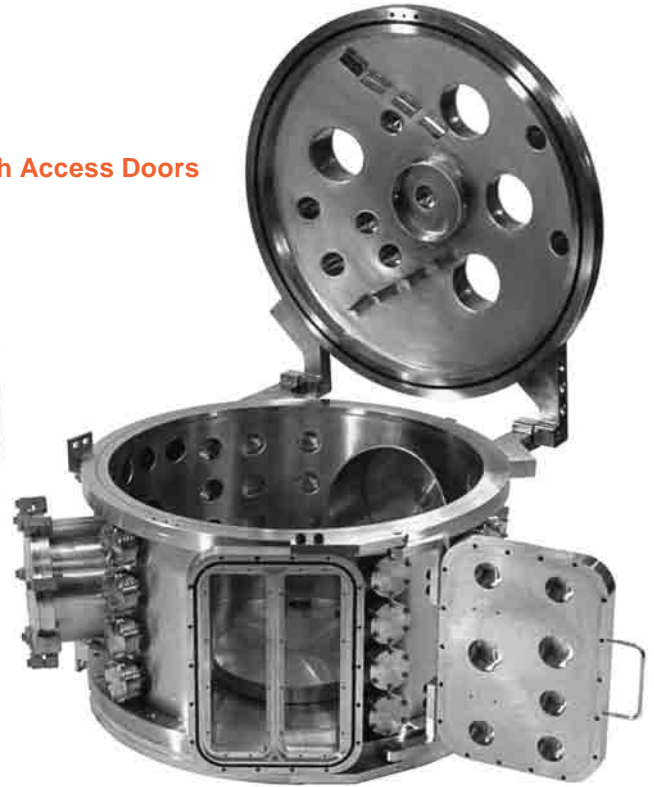


Chamber within a Chamber



Vacuum Chambers 8

Cylindrical Process Chambers with Access Doors



Cryostat



Electrical Feedthrough Collar with Adjustable Bellows





1040 La Avenida Street, Mountain View, CA 94043-1422 USA

Customer Service:

800-227-8059 or 650-964-3323

Fax: 650-964-6153

Email: vacman@huntvac.com

www.huntvac.com